

Chipbreaker



Patent Pending

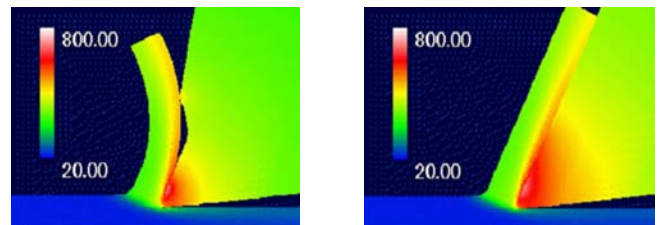
FEATURES

- ◆ Reduced heat generated at increased chip loads
- ◆ Prevents scoring on gullet surface
- ◆ Reduced chip weld
- ◆ Reduced backing fatigue

BENEFIT

- ◆ Higher cutting rates
- ◆ Increased blade life
- ◆ Reduced tooth stripping
- ◆ Reduced blade breakage

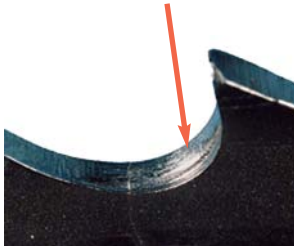
All equate to the lowest possible cost per square inch of metal cutting.



Reduced red heat area versus conventional blades.

TOOTH SELECTION

Chip scoring prevention



	Light Structural Steel								
	2"	4"	6"	8"	10"	12"	16"	20"	28"
Light Structural Steel									
Structural Steel				2.5/3.5					
Bundle Cut		2.5/3.5							
Mild Steel	2.5/3.5					2/3			
Die, Tool Steel		3/4				2/3			
Stainless Steel	3/4				2/3				
Nickel Alloy	3/4			2/3					

SPECIFICATION & AVAILABILITY

* 2/3, 3/4 are HiLo type (2.5/3.5 general purpose)

Width (in.)	Thickness (in.)	Pitch				
		1.1/1.5	2/3	2.5/3.5 *	3/4	4/6 *
1	0.035				●	
1 1/4	0.042		●		●	
1 1/2	0.050	●	●		●	●
2	0.063	●	●	●		
2 5/8	0.063	●				
3	0.063	●				

Specifications may change without notice at the sole discretion of Amada's Engineering Department.



Amada Cutting Technologies, Inc.

14849 E. Northam Street, La Mirada, CA 90638

Phone: 800.877.4729 or 714.670.1704

Fax: 714.670.2017

www.amadabandsaw.com